



Home & Land Packages



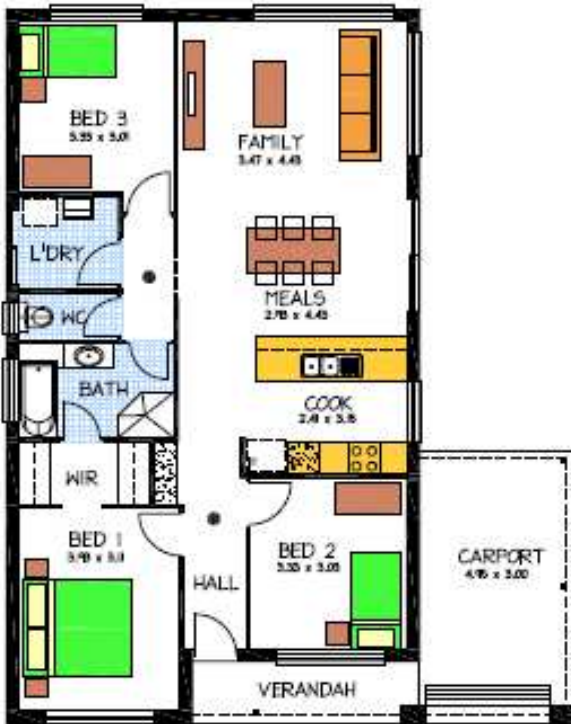
REGENCY COTTAGE

LOT 261 SARA COURT VICTOR HARBOR

This package includes:

- 361m2 of flat land in the McCracken Estate in Victor Harbor
- Rossdale Homes Regency Cottage built to Select Specifications
- 3 Bedrooms, master with WIR and two-way bathroom
- Single carport with automatic roller door and brick piers
- Laundry & linen cupboards are included
- Front elevation has Scalloped quoins to Bed 1 & 2 windows as well as Bed 1 corners, also included 2 gables to roof
- All services have been allowed for including LPG bottle ready
- Healthy footings allowance including all soil removal from site
- Quality Westinghouse appliances to kitchen including gas hotplates, retracta range-hood set in overhead cupboards & fan-forced electric oven
- Instantaneous hot water system for never ending hot water
- Split system wall mounted A/C for all year round comfort
- Carpets to all bedrooms with timber laminate floors to living areas
- Insulation to ceiling, external walls & internal walls
- Storm-water disposal system & Rain-water tank are included
- Colored concrete drive-way & perimeter paths are also included
- 25 Year Structural Warranty
- 100% Absolute Fixed Price Contract with no hidden costs

PACKAGE FROM: **\$273,000**



Disclaimer: All care has been taken in the preparation of this material. No responsibility is taken for any errors or omissions. Details are subject to change without notification. Images for illustration purposes only. E&EO.

FOR THIS OFFER CALL
BRAD: 0421 940 398

P: 08 8433 2000 www.rossdalehomes.com.au

 *Because trust is a must.*
**ROSSDALE
HOMES**